



ELEVATION A



ELEVATION B


**EVERSLEY
ESTATES**

TREASURE HILL

The Eaton Collection

Eaton 9

A 3,310 SQ.FT. **B** 3,310 SQ.FT. **C** 3,310 SQ.FT.

Includes 112 SQ.FT. Open Area

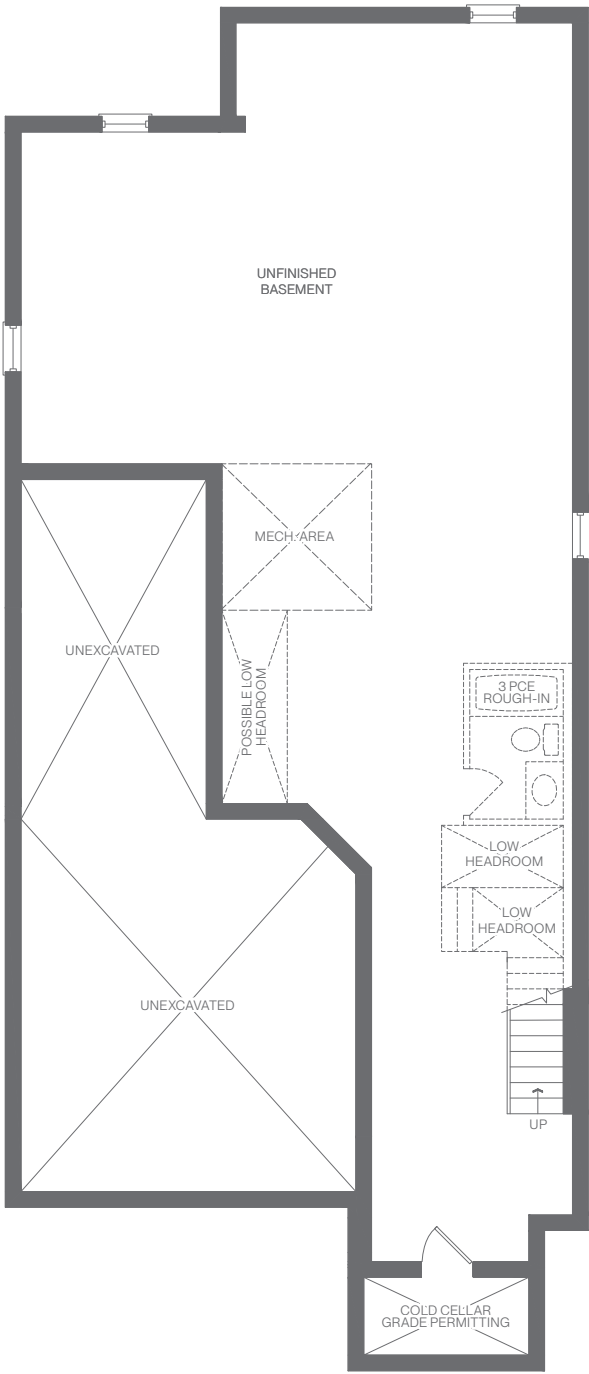
4 Bedroom



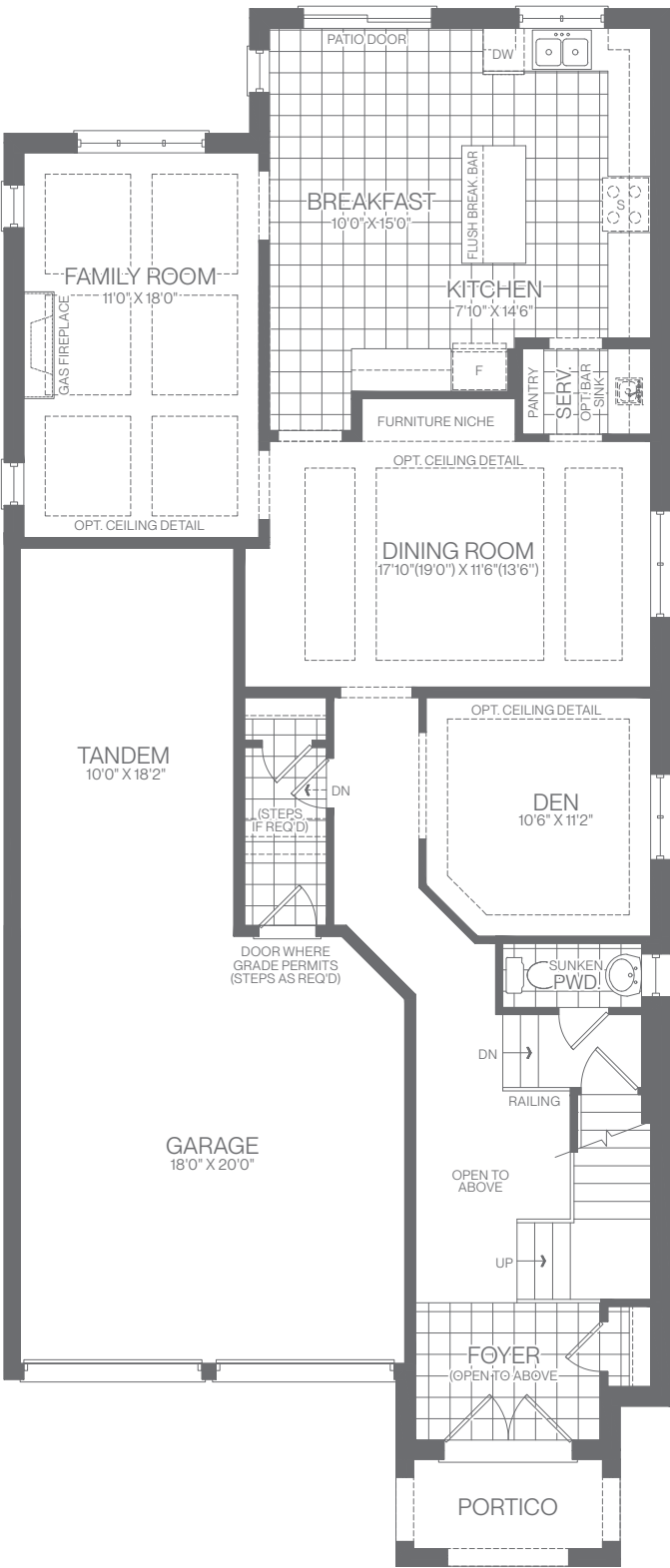
ELEVATION C

Eaton 9

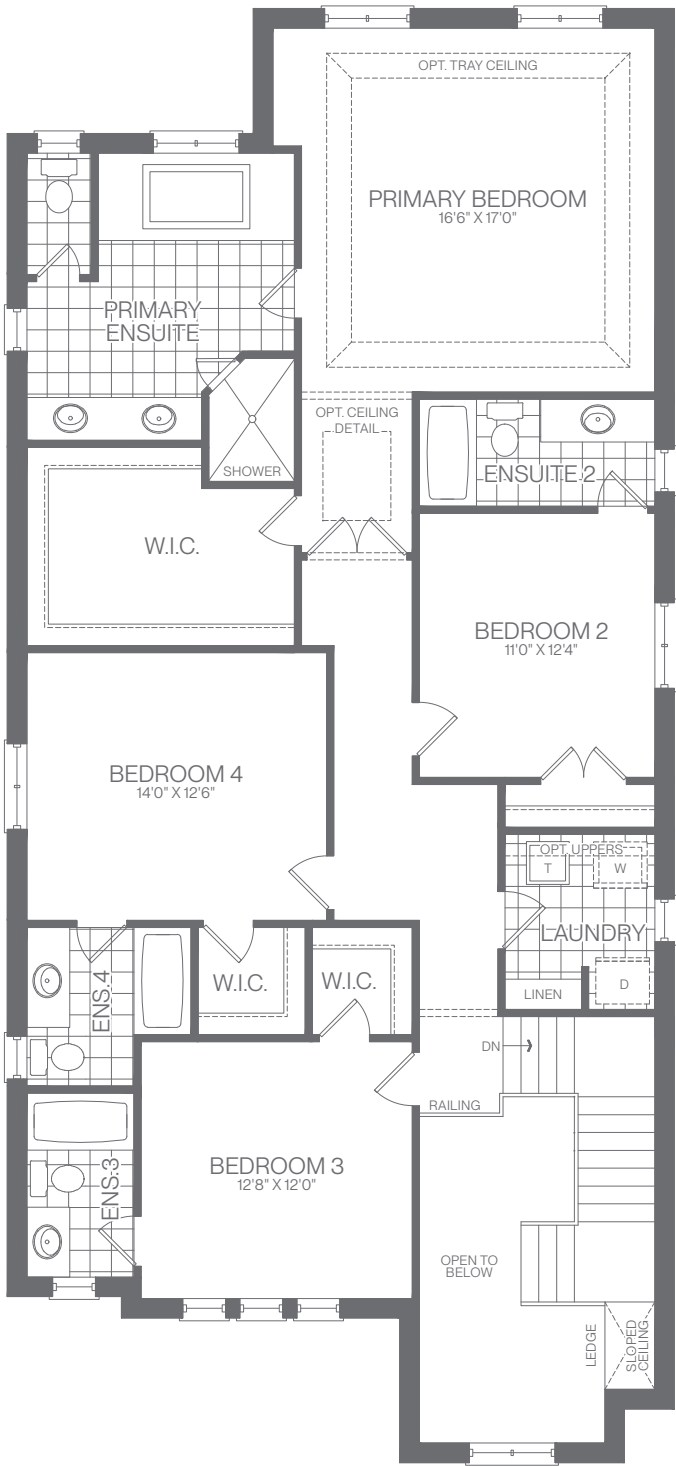
A 3,310 SQ.FT. **B** 3,310 SQ.FT. **C** 3,310 SQ.FT.
Includes 112 SQ.FT. Open Area
4 BEDROOM



ELEVATION A, B & C | BASEMENT

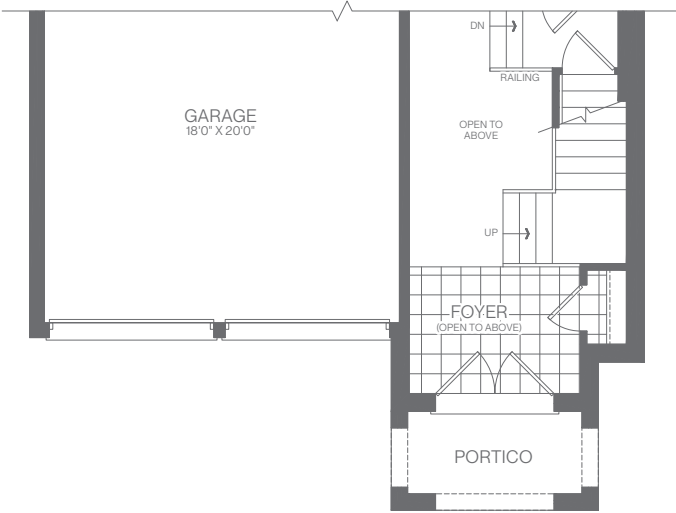


ELEVATION A | MAIN FLOOR

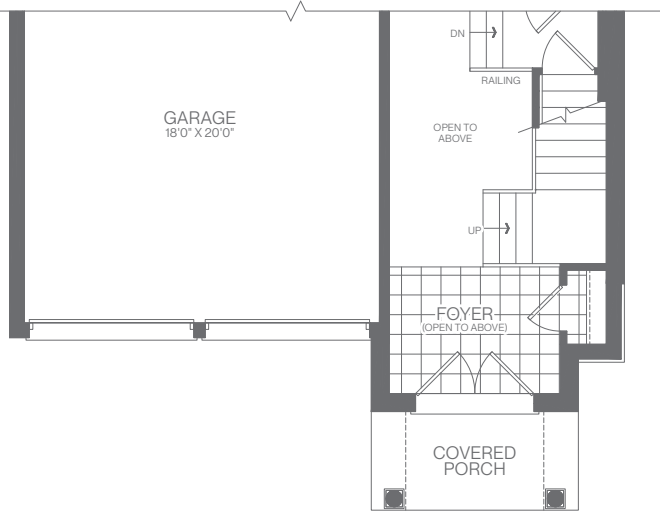


ELEVATION A | SECOND FLOOR

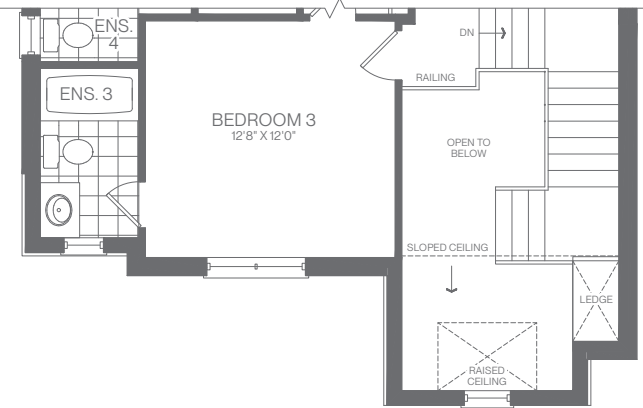
ELEVATION B



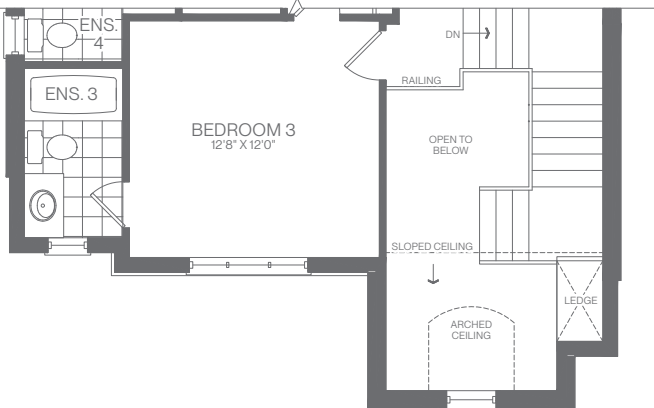
ELEVATION C



ELEVATION B



ELEVATION C



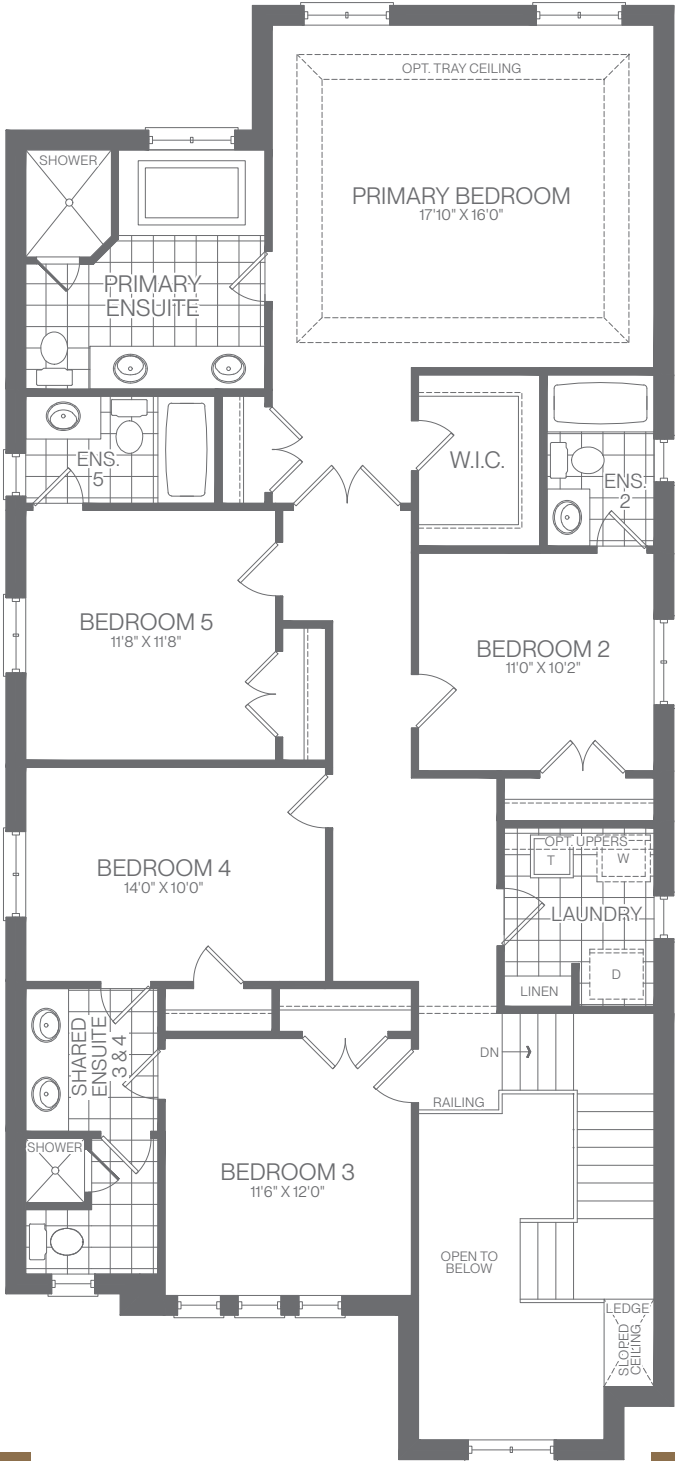
All dimensions are approximate. Information subject to change without notice. The square footage is calculated from the outside dimension of the building on the first and second floor and includes the finished area of the basement if applicable. Garages, attics and unfinished area in the basement are not included in calculations. Basement columns, water heater and furnace are not shown and will be placed based on builder's requirements. Number of steps and railings provided may vary due to grade. Windows vary as per elevation. Actual useable floor space may vary from the stated floor area. Renderings are artist's concept. E.&O.E. - D.O.P. 2024.

Eaton 9

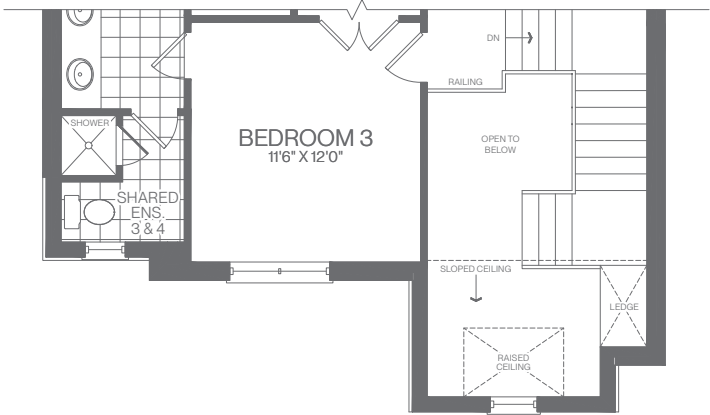
ELEVATION A | SECOND FLOOR

A 3,310 SQ.FT. B 3,310 SQ.FT. C 3,310 SQ.FT.
Includes 112 SQ.FT. Open Area

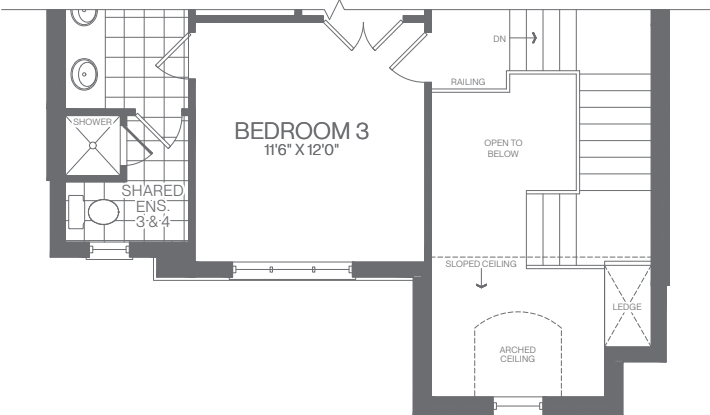
OPT. 5 BEDROOM LAYOUT



ELEVATION B



ELEVATION C



All dimensions are approximate. Information subject to change without notice. The square footage is calculated from the outside dimension of the building on the first and second floor and includes the finished area of the basement if applicable. Garages, attics and unfinished area in the basement are not included in calculations. Basement columns, water heater and furnace are not shown and will be placed based on builder's requirements. Number of steps and railings provided may vary due to grade. Windows vary as per elevation. Actual useable floor space may vary from the stated floor area. Renderings are artist's concept. E.&O.E. - D.O.P. 14/01/2025.