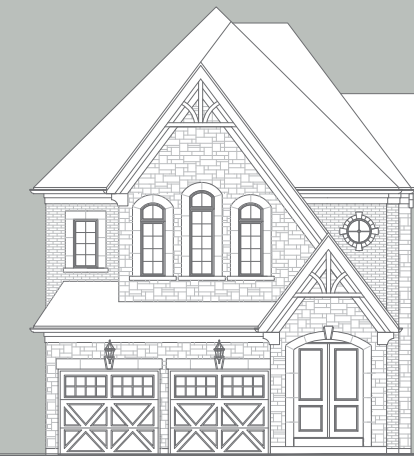




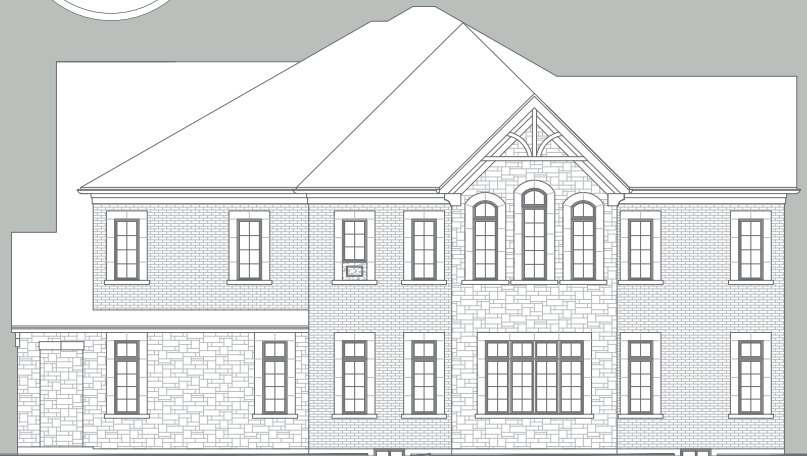
THE ESTATE COLLECTION

THE FARLOW-3 CORNER

A 2,857 SQ.FT. **B** 2,882 SQ.FT. **C** 2,849 SQ.FT.
Includes 10 SQ.FT. Open Area



ELEVATION A



ELEVATION B

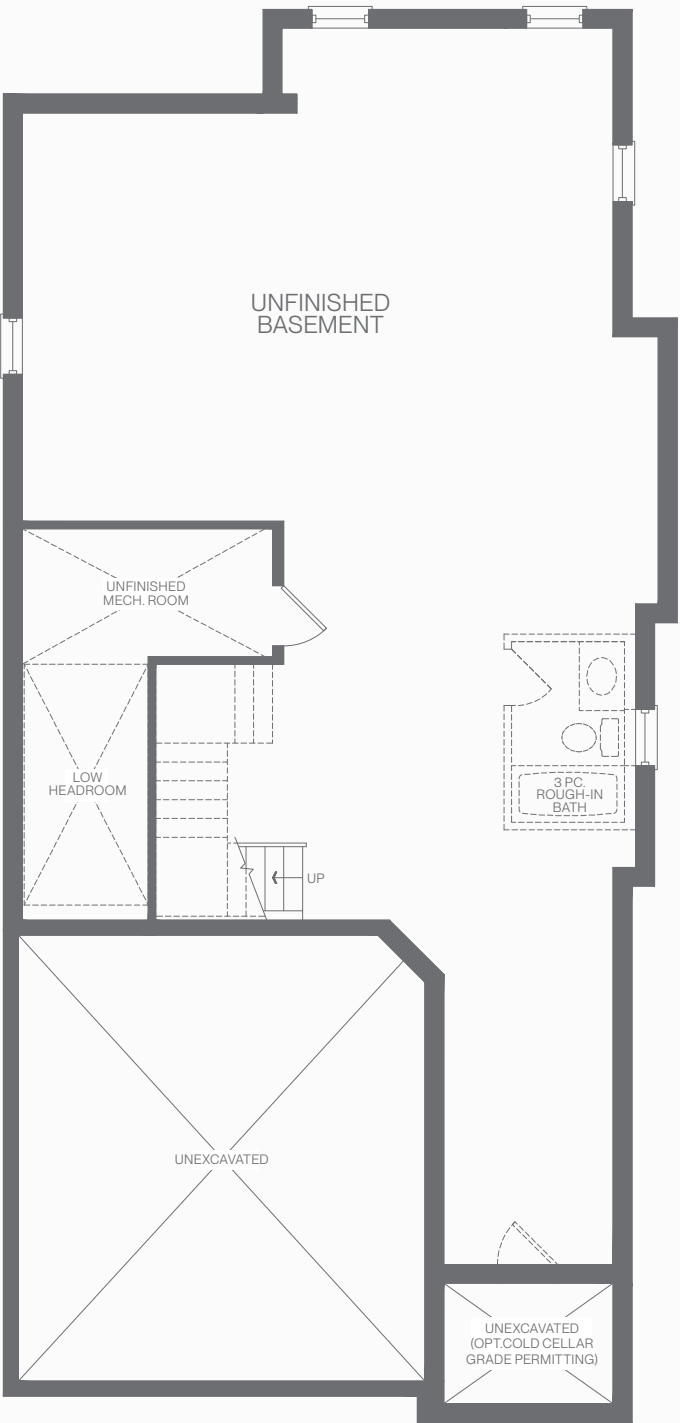


ELEVATION C

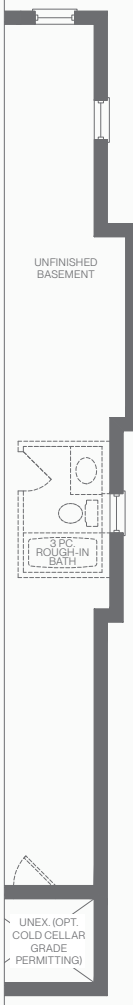


THE FARLOW-3 CORNER

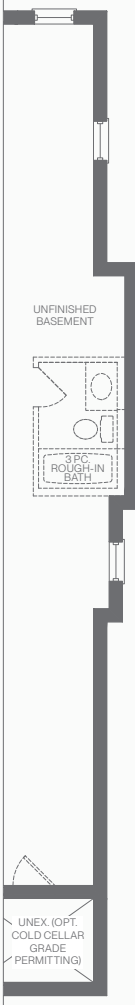
(36-03) **A** 2,857 SQ.FT. **B** 2,882 SQ.FT.
C 2,849 SQ.FT.
Includes 10 SQ.FT. Open Area



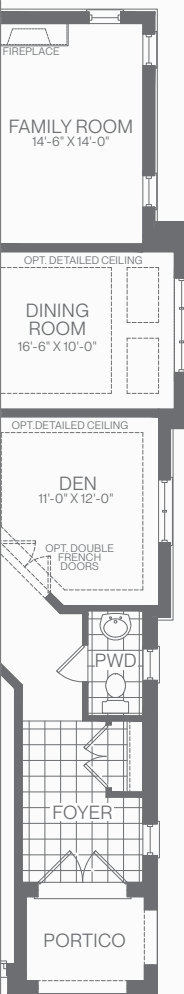
BASEMENT PLAN / ELEVATION A



ELEVATION B

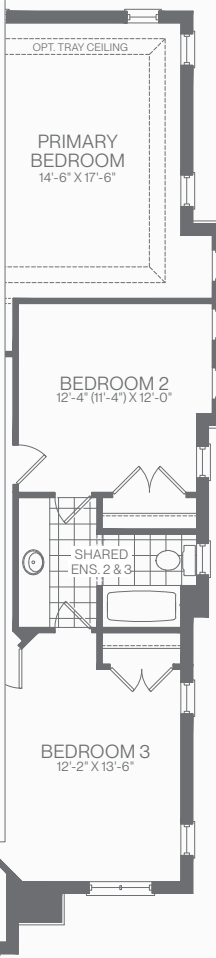


ELEVATION C



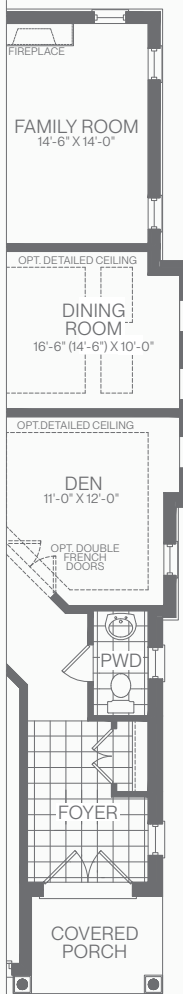
GROUND FLOOR PLAN

ELEVATION B

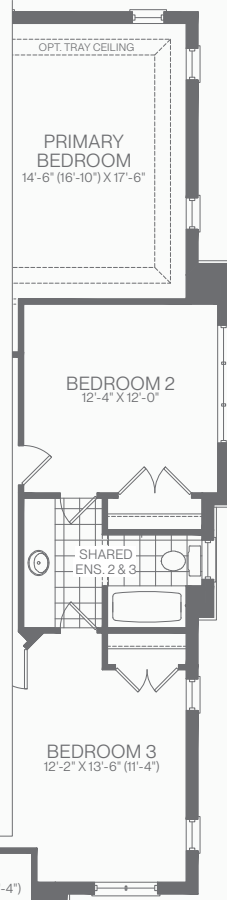


SECOND FLOOR PLAN

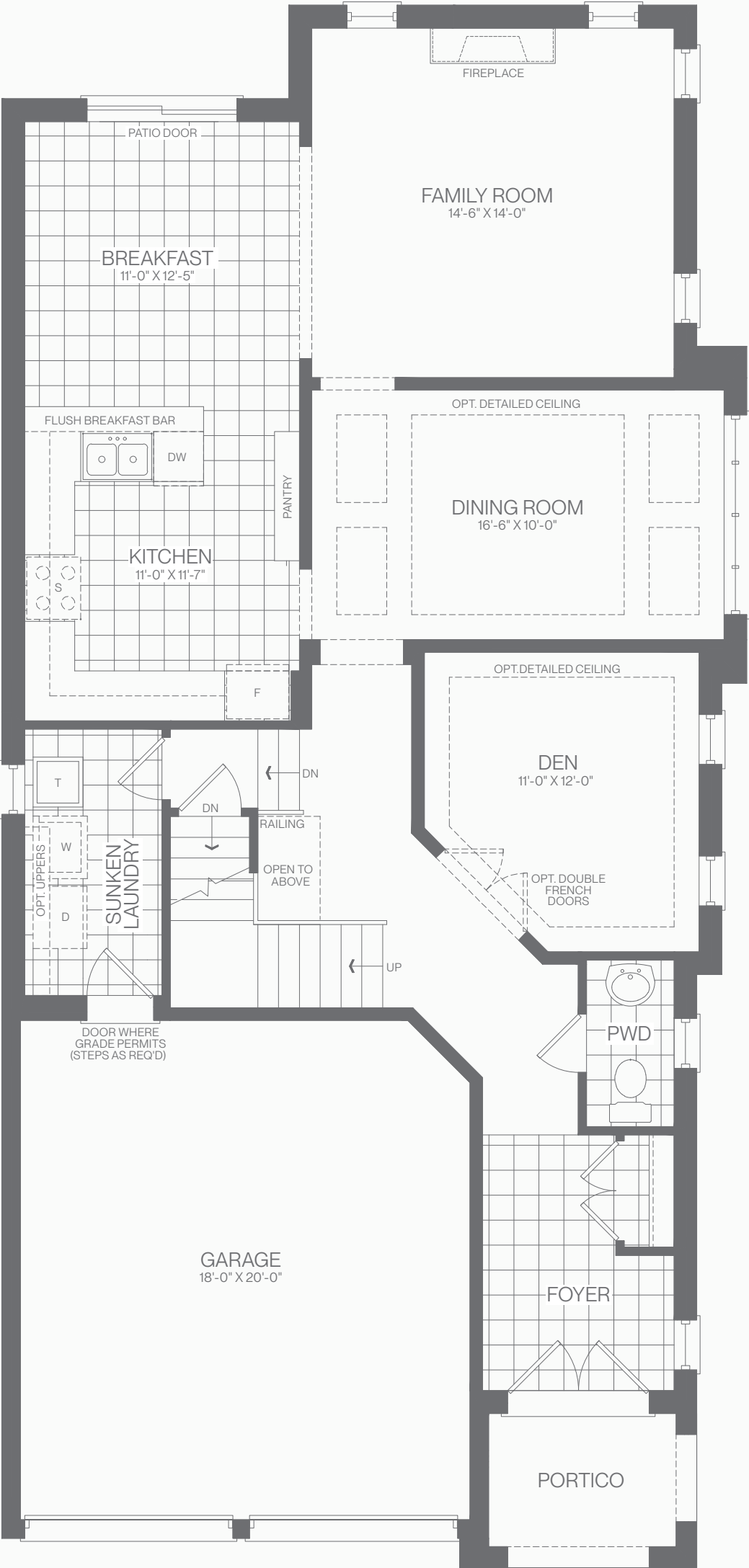
ELEVATION C



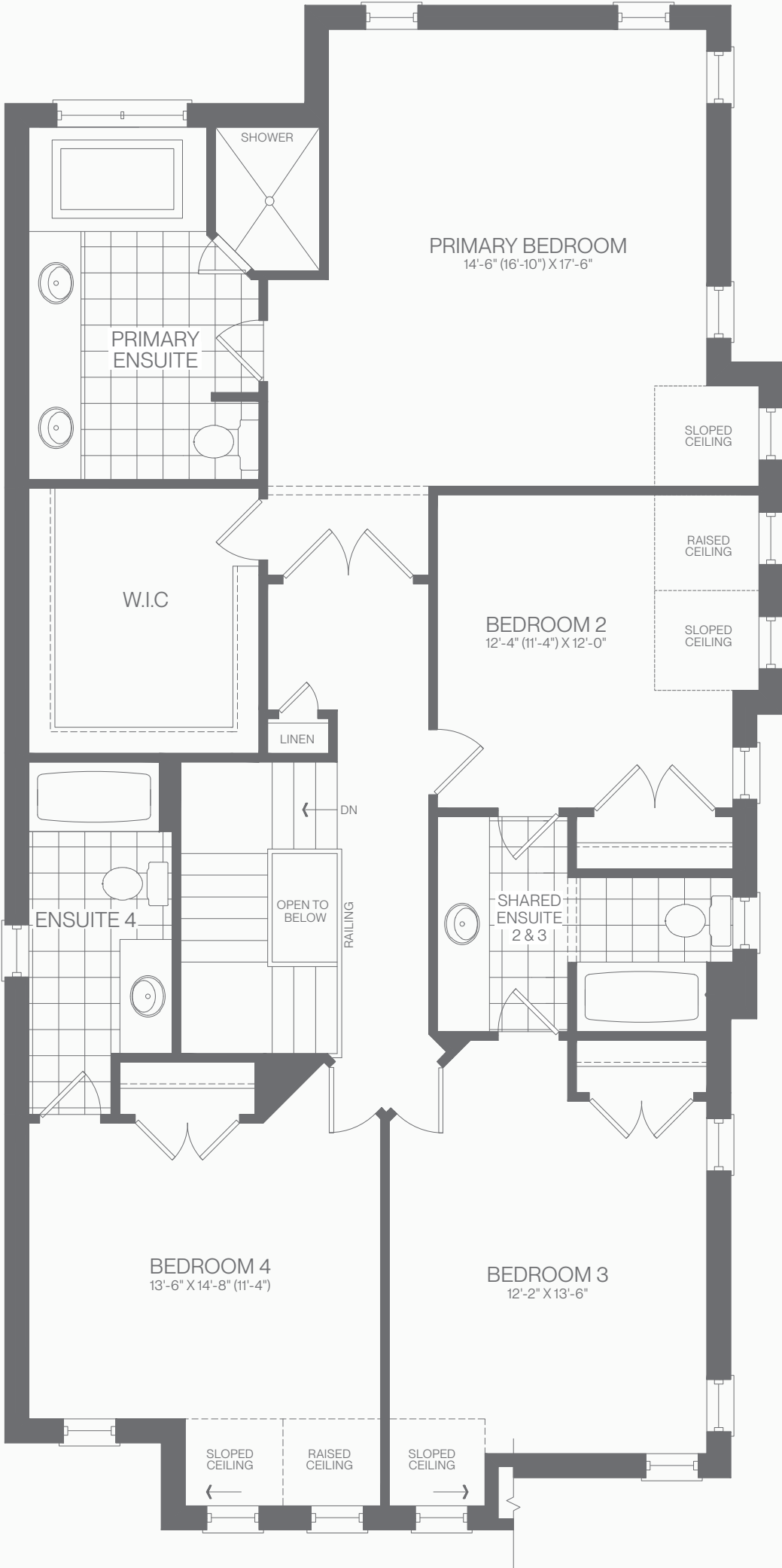
GROUND FLOOR PLAN



SECOND FLOOR PLAN



GROUND FLOOR PLAN ELEVATION A



SECOND FLOOR PLAN ELEVATION A

All dimensions are approximate. Information subject to change without notice. The square footage is calculated from the outside dimension of the building on the first and second floor and includes the finished area of the basement if applicable. Garages, attics and unfinished area in the basement are not included in calculations. Basement columns, water heater and furnace are not shown and will be placed based on builder's requirements. Number of steps and railings provided may vary due to grade. Windows vary as per elevation. Actual useable floor space may vary from the stated floor area. Renderings are artist's concept. E.&O.E. - D.O.P 2024.