

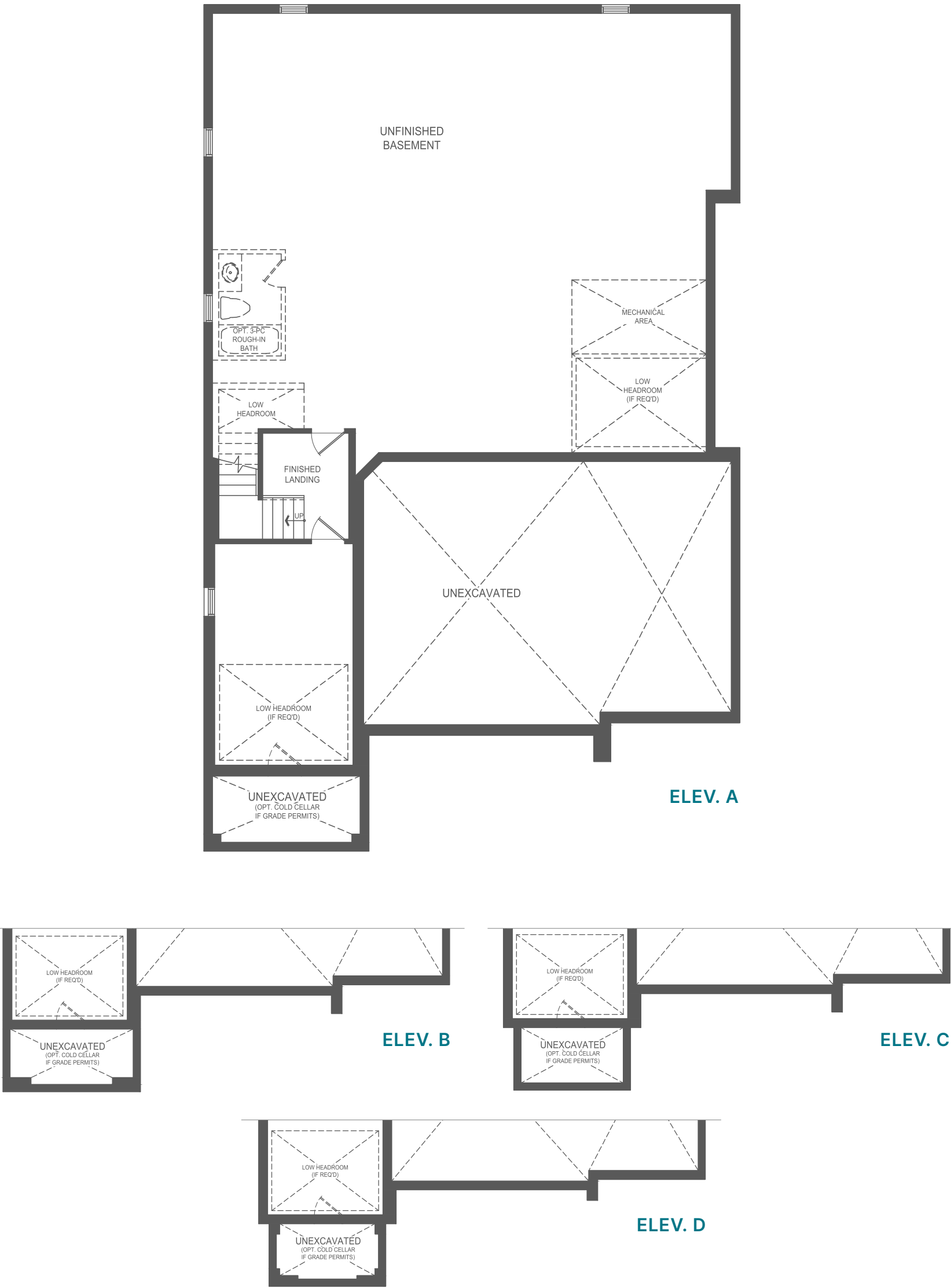
WESTPORT SIX



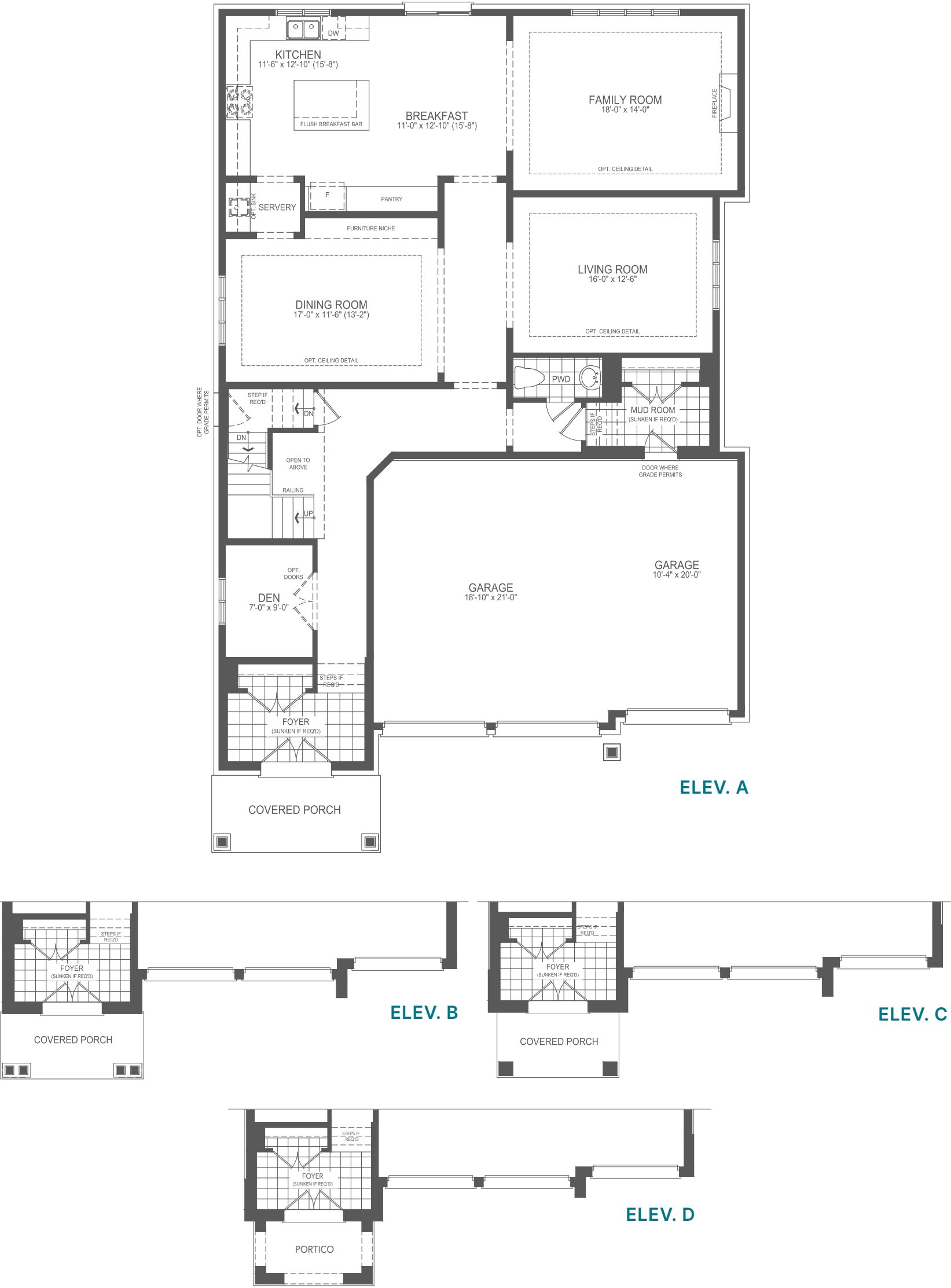
ELEVATION A | 4,280 SQ. FT. ELEVATION B | 4,362 SQ. FT.
ELEVATION C | 4,339 SQ. FT. ELEVATION D | 4,321 SQ. FT.

Includes 85 sq.ft. of open area and 58 sq. ft. of finished Lower Level area

LOWER LEVEL



MAIN LEVEL



UPPER LEVEL



Steps and porches may vary at any exterior or garage entrance ways due to grading variance. Actual usable floor space may vary from stated floor area. All renderings are artists concept. Dimensions, specifications, architectural and mechanical detailing are approximate and subject to minor modifications. E. & O. E.