

# BROOKLIN VUE

## 2 STOREY TOWNS

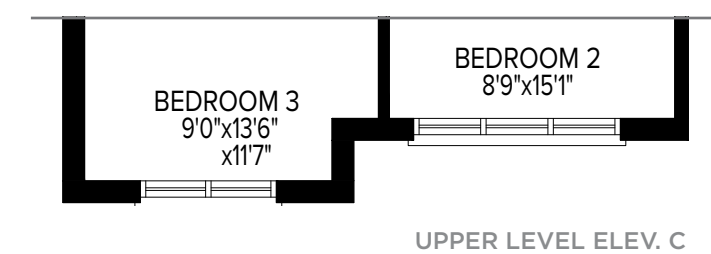
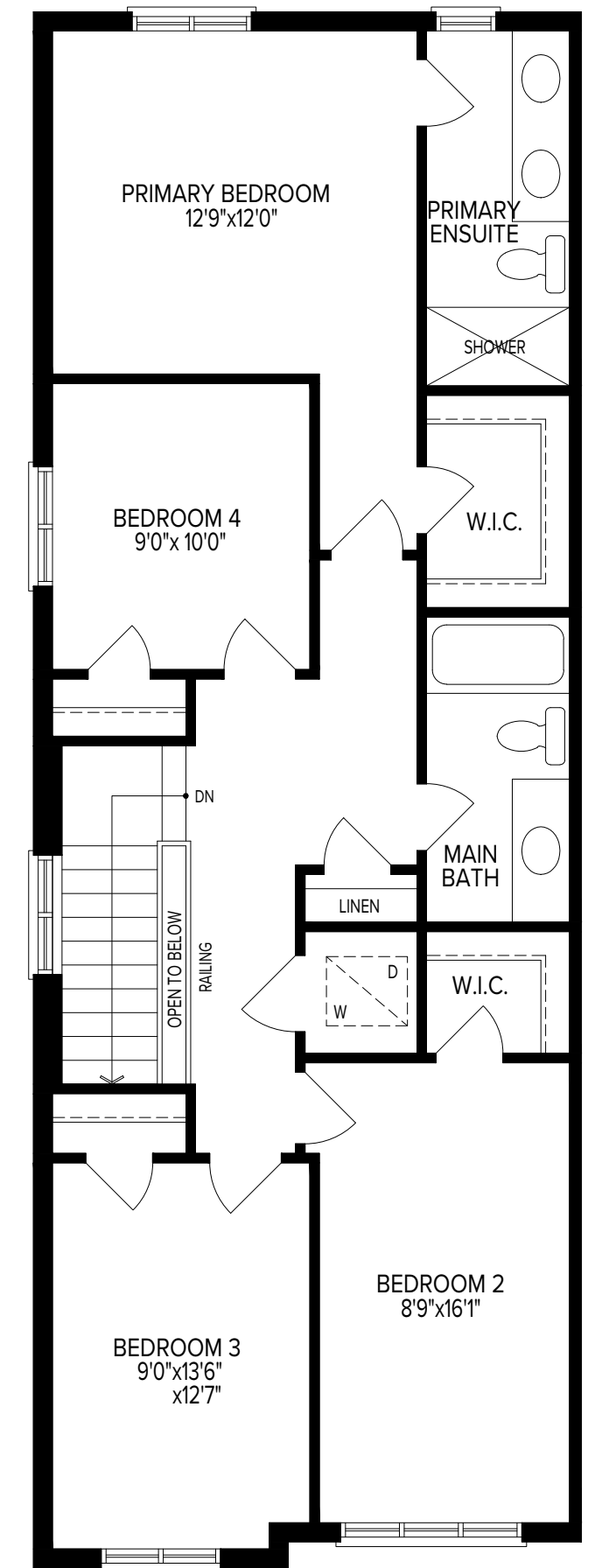
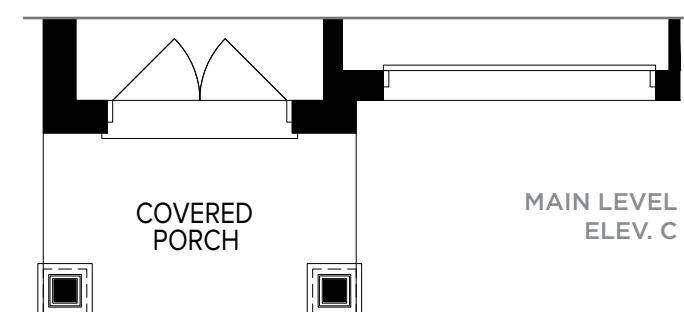
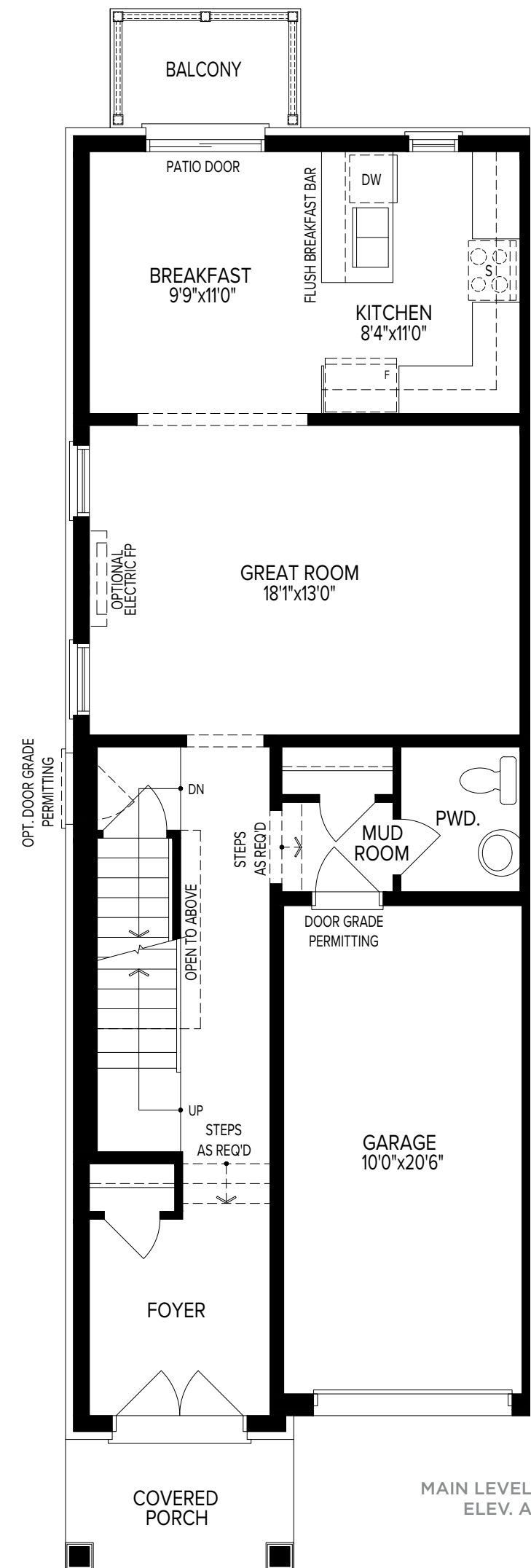
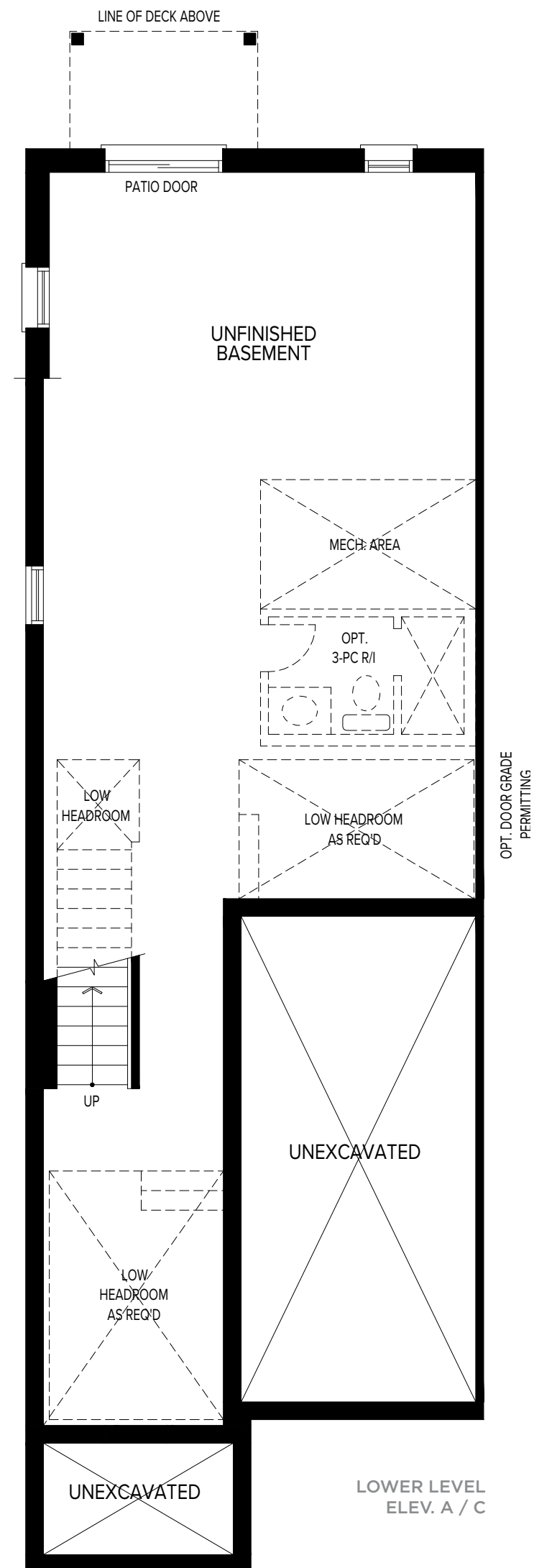
### T3 END



ELEV. A - 1,877 sq.ft.



ELEV. C - 1,866 sq.ft.



NOTE: Orientation of home may be reversed and purchaser agrees to accept the same. Number of risers may vary at any exterior entranceways due to grading variance. Actual usable floor space may vary from stated floor area. All renderings are artist's impression. Dimensions, specifications, architectural and mechanical detailing are subject to minor modifications. Unit setback and roofline may vary due to siting. E. & O. E.